



Free open-source software for
cultural heritage data management

www.archesproject.org



Enables FAIR data practices

www.archesproject.org



Can accommodate any language

www.archesproject.org



Is flexible, customizable and
extendable for any use case

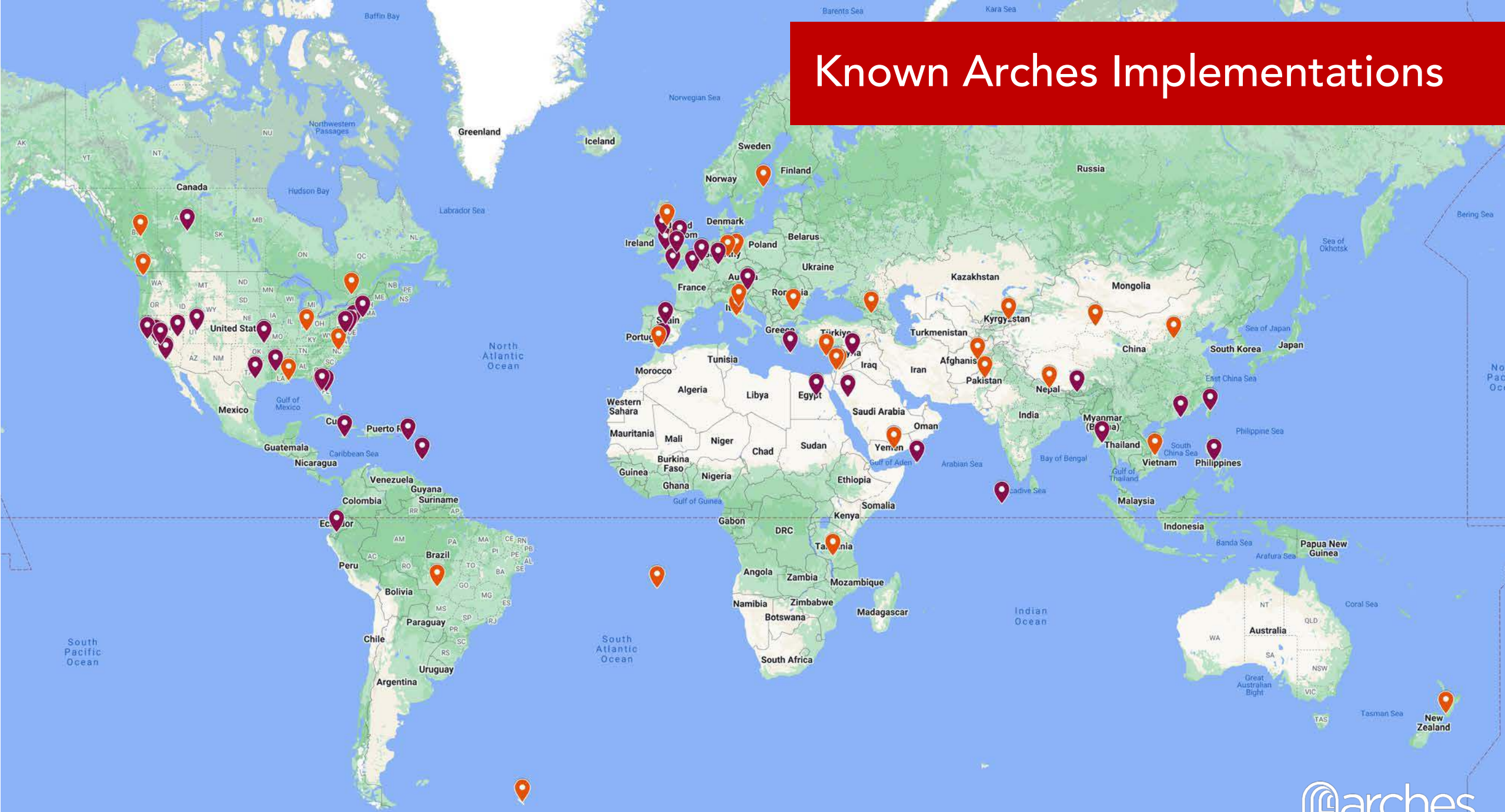
www.archesproject.org



Is supported by an international
community of users

www.archesproject.org

Known Arches Implementations



Data Management



Collect & Share

- Mobile app: on/off-line collection
- Robust import / export with notifications



Controlled Vocabularies

- Thesauri management — *Reference Data Manager (RDM)*



Structure & Storage

- Semantic, self-describing, & sustainable data structure
- Dynamic UI-generation
- Multiple ontologies—e.g., CIDOC CRM
- Cloud/server deployable
- API & linked data support
- Multiple data types supported



Controlled Access, Audit & Review

- User & group secure access management
- Granular (node level) permission control
- Detailed audit of changes to data
- Provisional (unpublished) data; data review

Data Discovery & Visualization



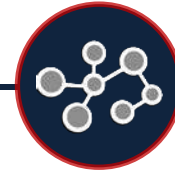
Search

- Semantic & thesauri-enhanced searches
- Searchable annotations
- Support for custom indexing
- Export search results
- Geospatial search
- Saved and Advanced searches



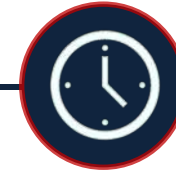
Spatial Data / GIS

- Integrates GIS functionality
- Seamless management of Arches data in external GIS – e.g., esri
- Changeable basemaps—e.g., historical maps
- Overlays supported
- Satellite imagery



Relationships

- Explore relationships between resources – e.g., people, materials, activities, historic events, objects, iconography
- Discovery of previously unknown connections / new knowledge



Time

- Temporal search
- Fuzzy date support
- Visualization of time distribution in entire dataset – *Timewheel*



Reports, Viewers & Annotations

- Customizable reports using *Report Manager*
- IIIF viewers and image annotations
- High-resolution image support
- Extended 3-D viewers
- Interactive spectra charts with comparisons
- Customizable dashboards

Project/Task Management

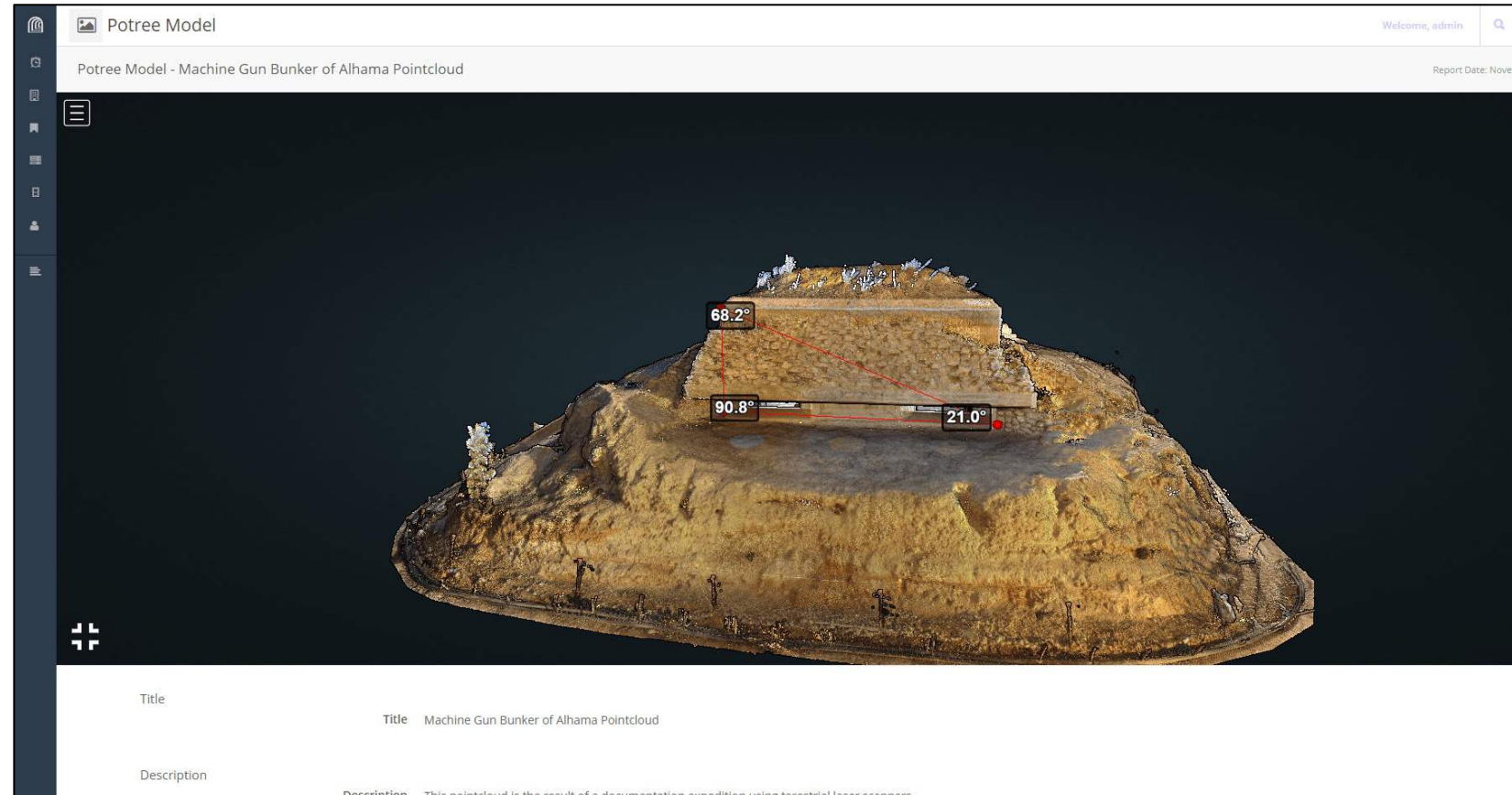


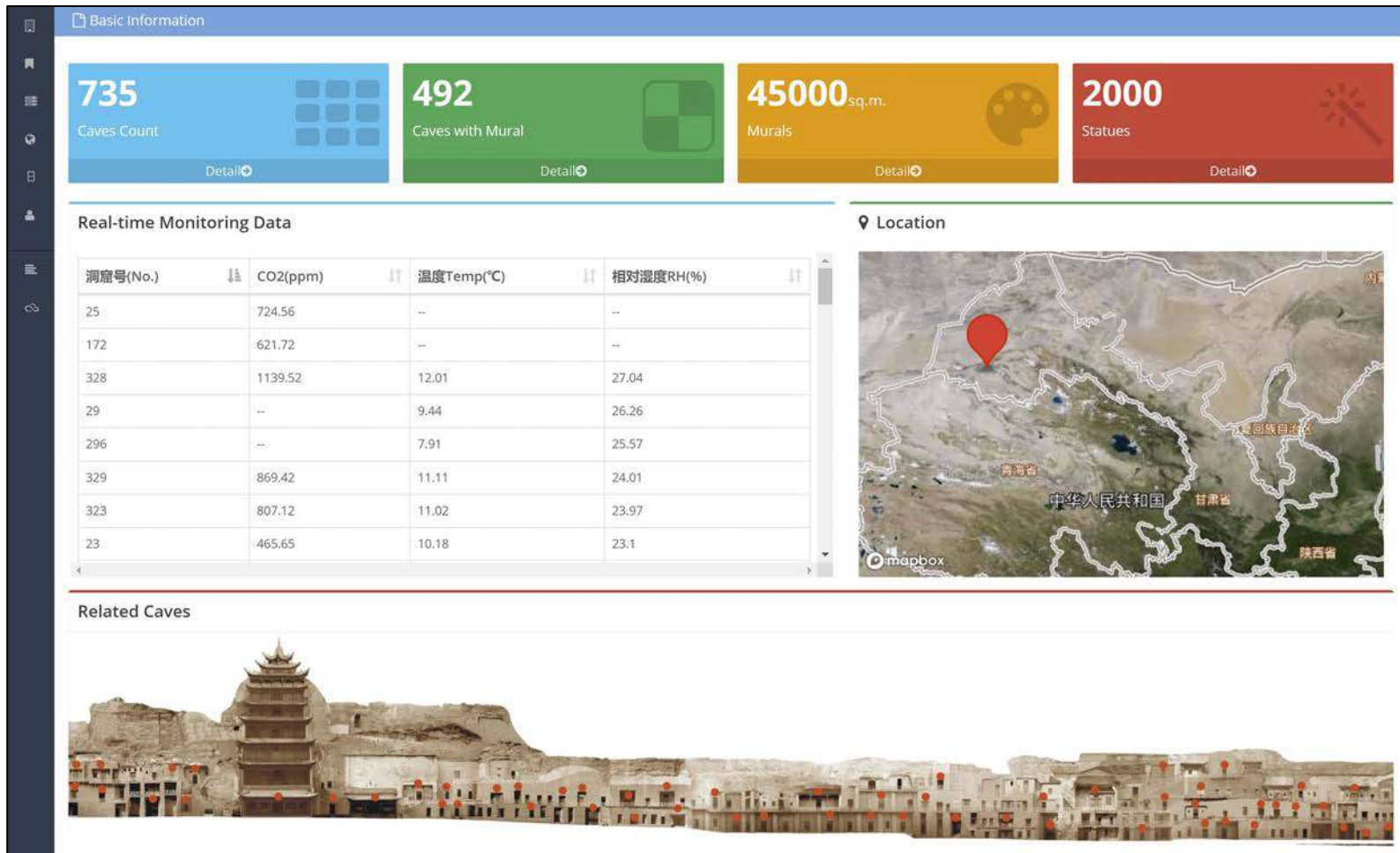
Workflows

- Comprehensive, flexible workflow (i.e., process) management
- Task tracking
- Notifications
- *Project Status* plugin
- Correspondence management and tracking
- Letter templates with auto completion

Global Digital Heritage

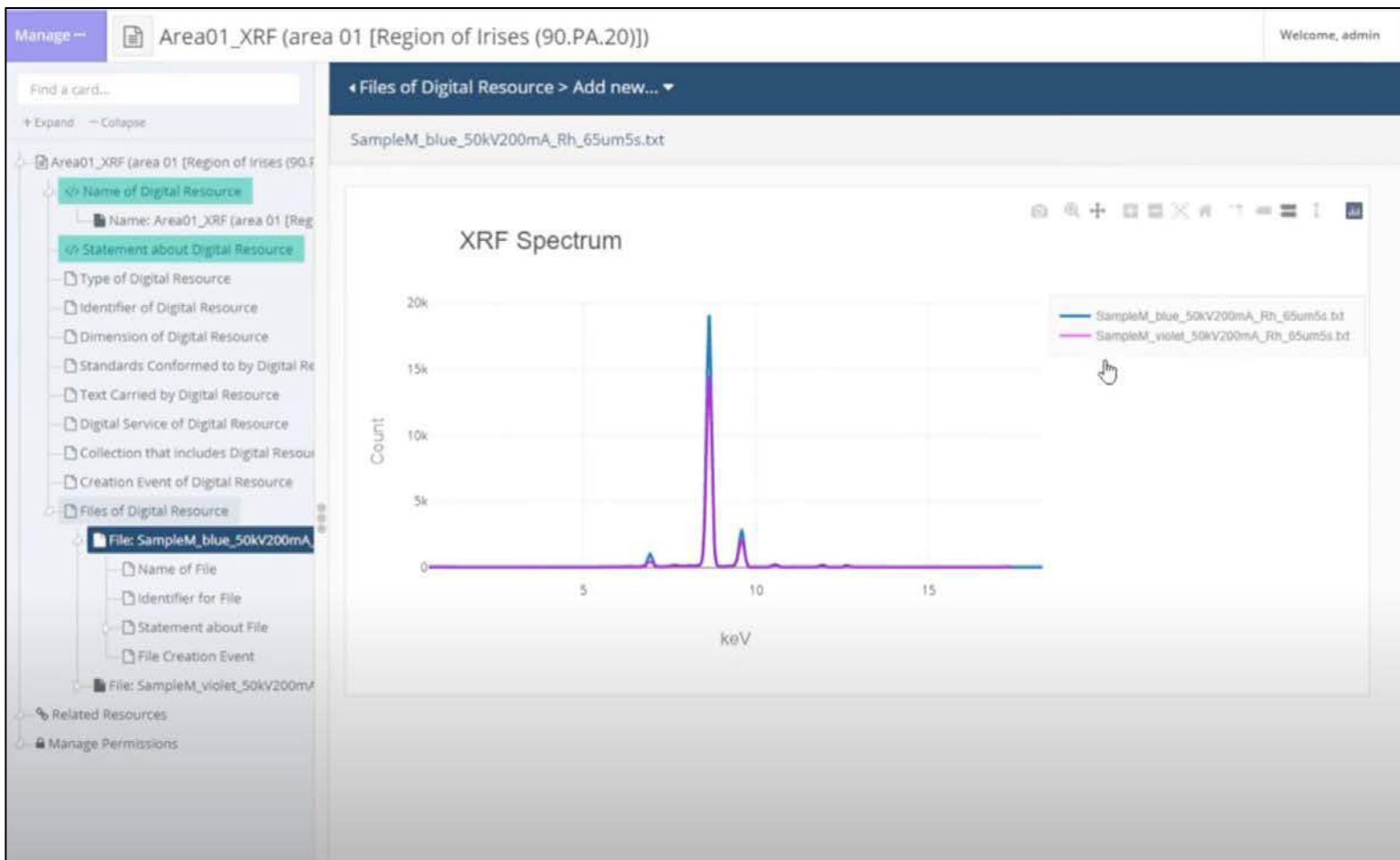
Global Digital Heritage (GDH) is a not-for-profit, private research and education organization dedicated to documenting, monitoring, and preserving our global cultural and natural heritage. GDH uses Arches to make digital data on nearly 100 sites and 300 artifacts (e.g. 3D models, point clouds and geospatial information) freely available to the public. With collaborations in Portugal, France, Italy, the United Arab Emirates, Morocco, and elsewhere, Arches is the key to creating a digital research environment for sharing 3D data.





Dunhuang Academy

The Dunhuang Academy implemented a pilot project, Arches for Buddhist grotto sites along the Silk Road in Gansu Province, in China. This implementation features a customization to show real-time environmental monitoring data.



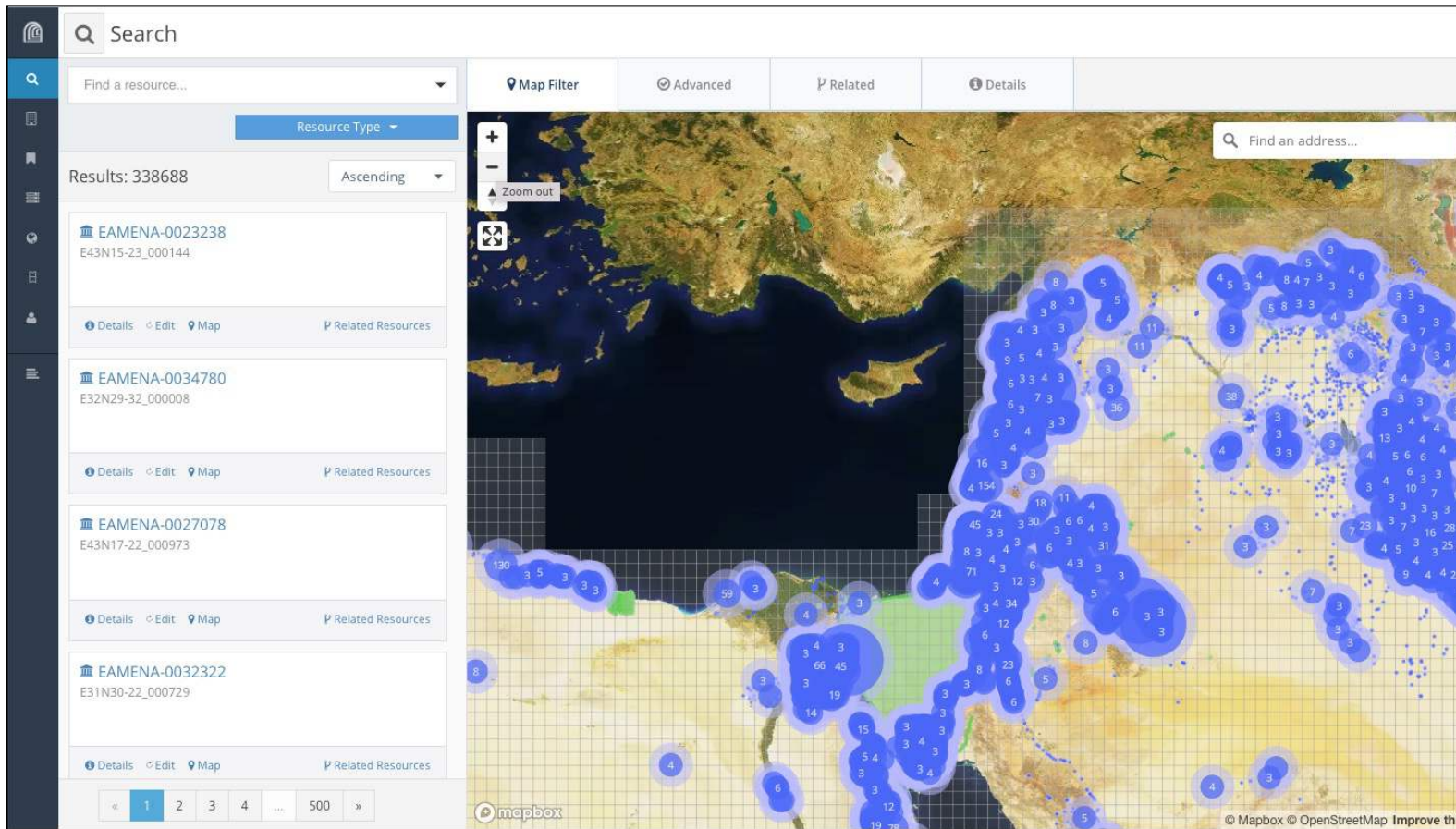
Arches for Science

Arches for Science is a comprehensive system now under development to help heritage scientists, other heritage professionals, and heritage organizations secure, retrieve, visualize, compare, and share heritage science data, and manage tasks in the lab.



Keystone: The Greater London Historic Environment Record (GLHER)

Historic England transitioned to internally using its Arches deployment known as Keystone as its system of record for the Greater London Historic Environment Record (GLHER). Keystone uses Arches Workflows to capture the Greater London Archaeology Advisory Service (GLAAS) Consultations process.



Endangered Archaeology in the Middle East and North Africa

The Endangered Archaeology in the Middle East and North Africa project based at Oxford University is using Arches to record archaeological sites and landscapes that are under threat across the Middle East and North Africa, including from rapid population growth, urban expansion, agricultural development, warfare, and looting.



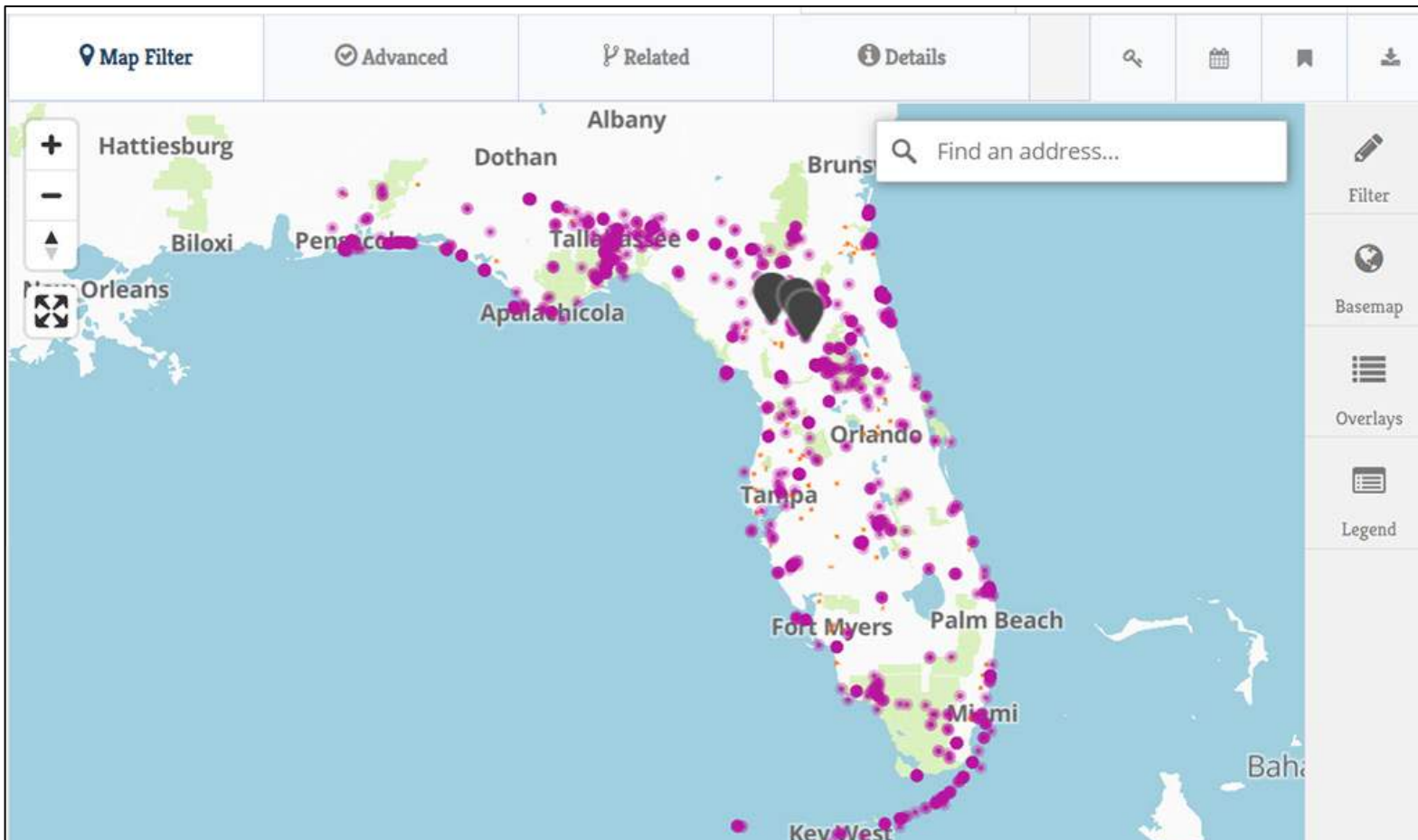
Historical maps of Candia

Developed at the Institute of Applied and Computational Mathematics, FORTH, Greece

Basilicata - Map of Candia

Historic Maps of Candia

The Institute of Applied and Computational Mathematics, Foundation of Research and Technology-Hellas, in Heraklion, Greece has developed a pilot web site for the management/promotion of the historical maps of Candia (old name for Heraklion, Crete). The site includes information for several 17th century maps and permits users to make queries with respect to the map characteristics (topic, cartographer, date etc.) and the geographic information depicted on the map.



Heritage Monitoring Scouts

Heritage Monitoring Scouts (HMS Florida) is a public engagement program of the Florida Public Archaeology Network (FPAN) focused on tracking changes to archaeological sites at risk, particularly those impacted by climate change in the form of erosion and sea level rise. The program launched a major update in August 2018, implementing Arches to power its portal to record and manage participants and their contributions to the program.